

173995

1800 ELM AVE

05/29/2025

**Commercial**

City: **Rapid City**  
Zip: **57701**  
Area: **Southeast**  
Type: **Office**

Asking: **\$1**  
Status: **ACTIVE**

# of Units: **1**  
Sale/Lease: **For Lease**  
Zoned: **Other**

County:

Virtual Tour:



Additional Media

**General**

Year Built:  
Stories: **1**  
Loading Dock:  
Ovhd Doors: **0**  
Ovhd Dr Wdt:  
Ovhd Dr Hgt:  
  
Perimeter:  
Power:  
Amp:  
Phase:  
  
# of Acres: **0.48**  
Lot Size:

Lease Terms:

Sale Terms:

Leased:

**Square Footage and Income/Expenses**

Total Square Foot: **240**  
Office SqFt:  
Retail SqFt:  
Warehouse SqFt:  
Rent/SqFt:  
Parking SqFt:

Gross Income:  
Insurance Exp.:  
Taxes \$/Year:  
Maintenance Exp.:  
Utilities (Ann):  
Total Expenses:  
Net Income:

**Features**

Foundation:

Construction:  
Meters:

Exterior Walls: **Wood**

Roof:

**Features**

Cooling:

Heating:

Services:

Safety Feat:

Building Use: **Office, Storage, Other**

Owner Pd Exp:

Parking: **Asphalt/Off-Street**

Ceiling Height: **Less 8 feet**  
Road Front.:

**FINANCIAL INFORMATION**Taxes: **n/a**Tax Year: **n/a**

Special Assessment \$:

Spec Assessment For:

**REMARKS**

Public Remarks: **The smallest single tenant commercial building in Rapid City. One room with restroom. Furnace heat, window air conditioner. \$400 a month plus utilities.**

173995

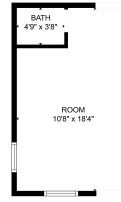
1800 ELM AVE  
Rapid City

SD

57701

\$1

#### Additional Listing Images



#### Listing Maps



GINA PLOOSTER

gina@rapidcitycommercial.com  
www.rapidcitycommercial.com  
KELLER WILLIAMS REALTY BLACK HILLS  
FIRM: 605-343-7500



This information is deemed reliable, but not guaranteed. This data is expressly for the use of MLS Members. Photos, floor plans, or any other